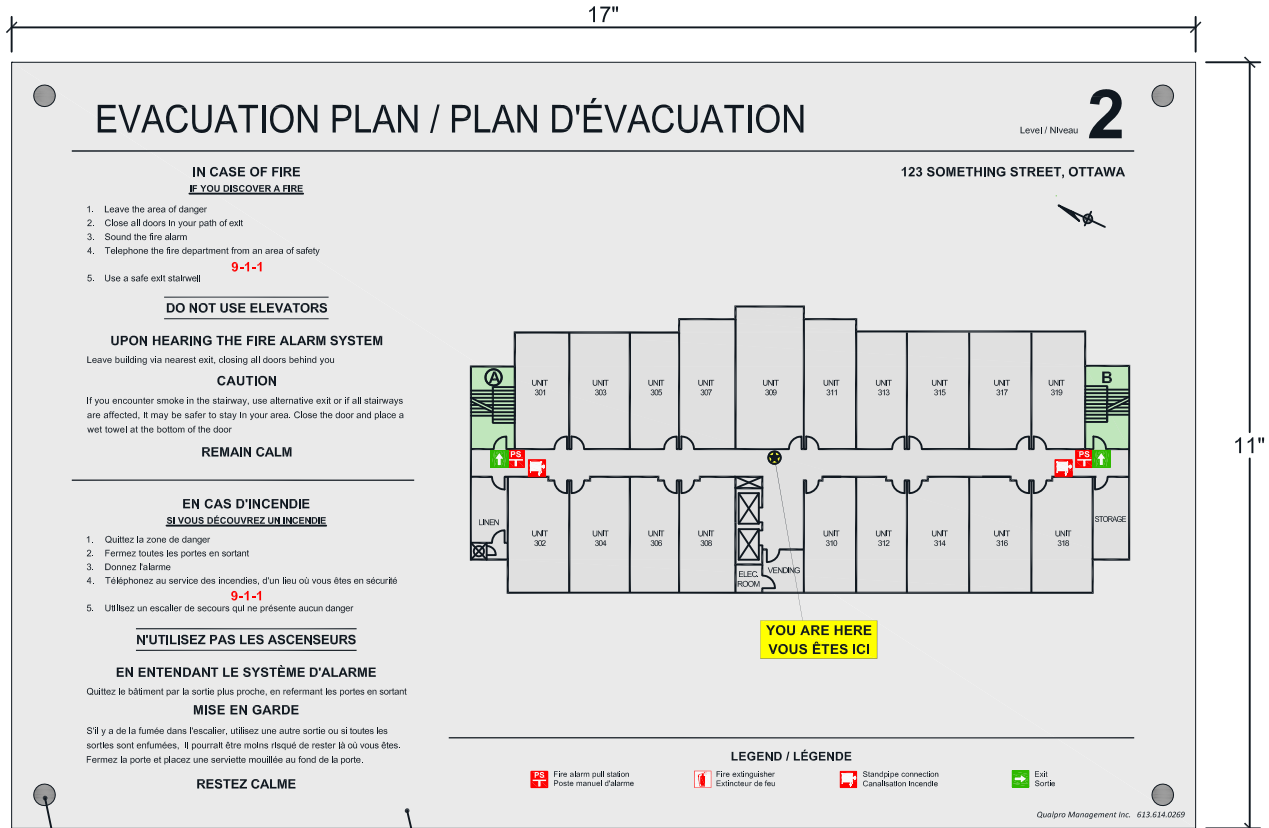


EVACUATION SIGN, COMPOSITE ALUMINUM



1/8" COMPOSITE ALUMINUM

3/4" DIAMETER x 1/2" STAINLESS
STEEL STANDOFF MOUNTS



Recommended installation
is 1200 to 1500mm (48 -60")

FINISHED FLOOR

ONTARIO REGULATION 213/07 FIRE PROTECTION AND PREVENTION ACT, 1997

2.8.2.5. POSTING FIRE EMERGENCY PROCEDURES

- (1) At least one copy of the fire emergency procedures shall be prominently posted and maintained on each floor area.