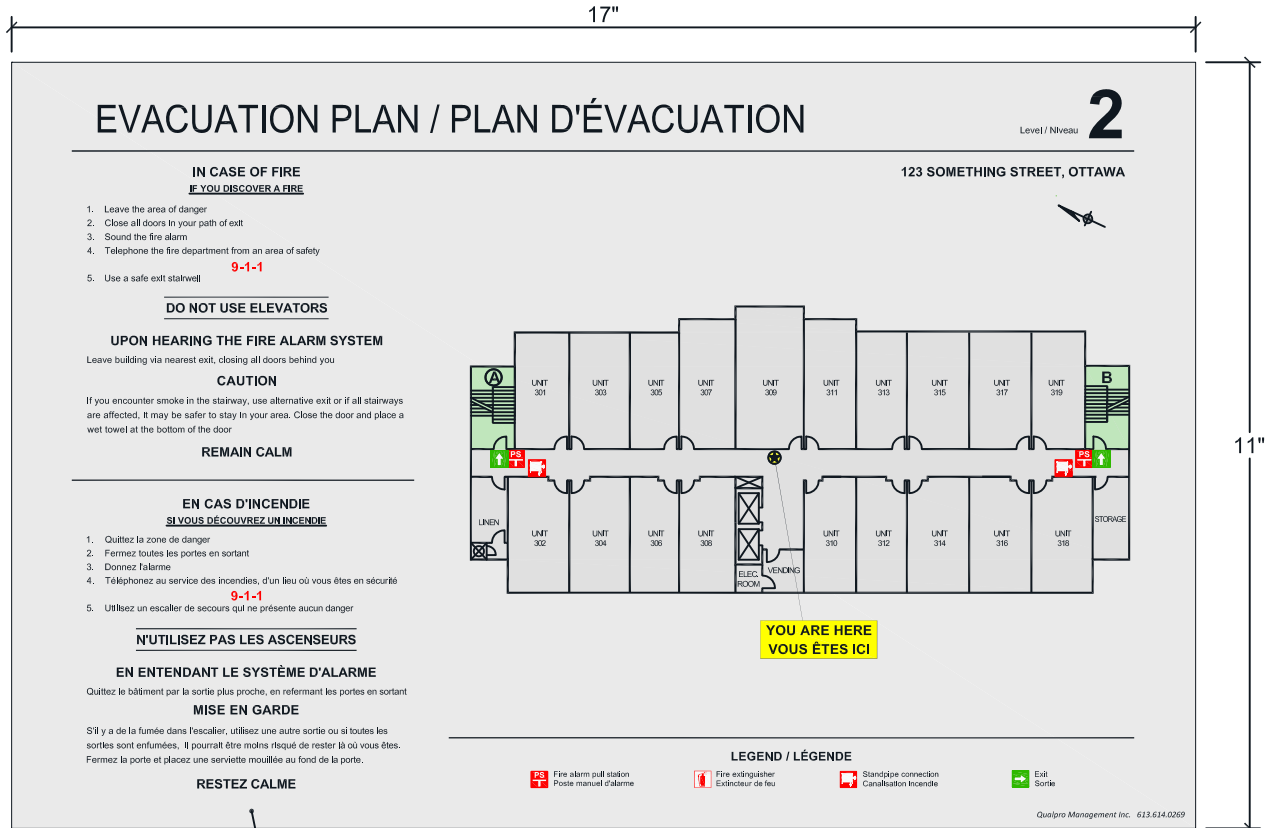


EVACUATION SIGN, BRUSHED ALUMINUM



24 GAGE BRUSHED ALUMINUM c/w
2-SIDED TAPE



Recommended installation
is 1200 to 1500mm (48 -60")

FINISHED FLOOR

**ONTARIO REGULATION 213/07
FIRE PROTECTION AND PREVENTION ACT, 1997**

2.8.2.5. POSTING FIRE EMERGENCY PROCEDURES

- (1) At least one copy of the fire emergency procedures shall be prominently posted and maintained on each floor area.